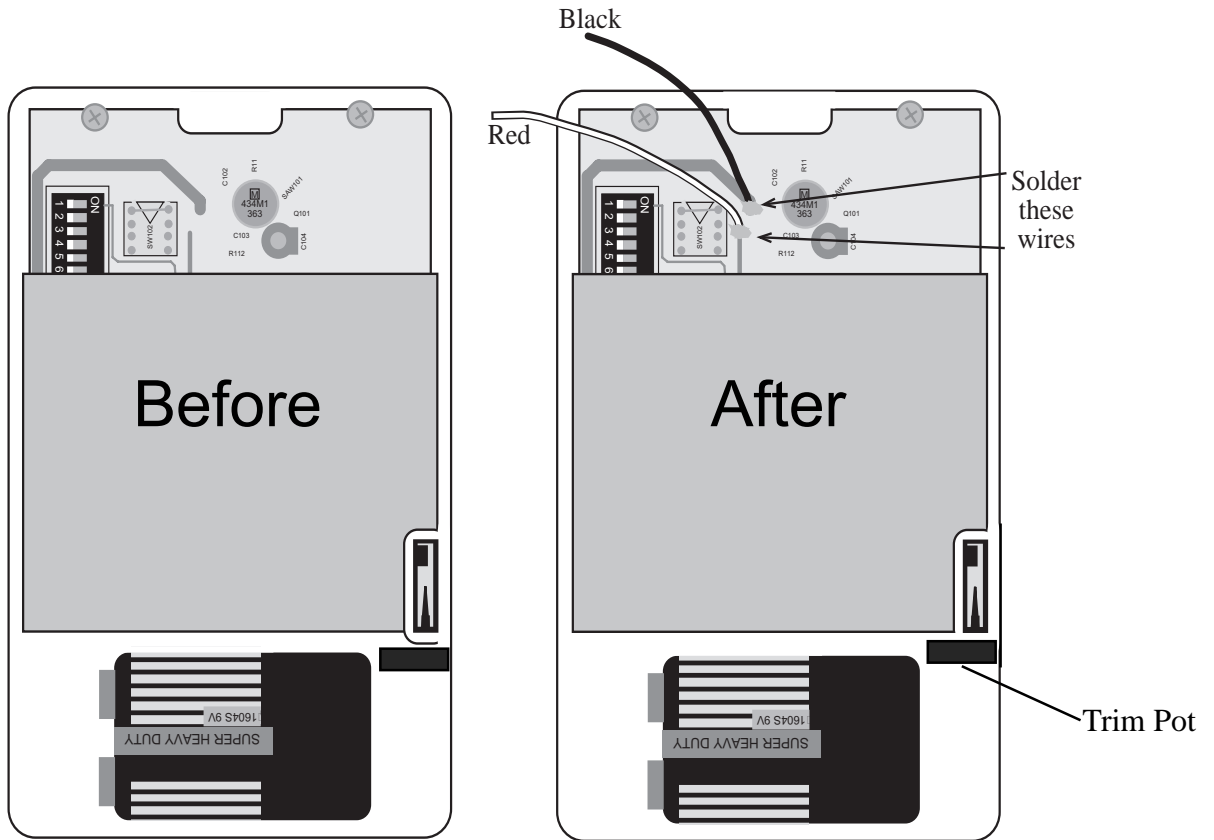


G4567 Passive Infrared Detector

Fig. 1



1. Open back.
2. Select 15 second disable period by following the second paragraph of the instructions.
3. Don't install battery yet.
4. Connect wires to points shown in Fig. 1 (the output of the PIR unit).
5. Note: this is the output of the PIR unit and it will light a LED or energize a 5V relay for about 2 seconds when it detects an intruder - simply wire as shown in Fig 2. Note: you can replace the relay in Fig. 2 directly with the G1148 electronic siren if you purchased this. Install a 9V battery in PIR unit.
6. If you wish a longer "alarm on" time build the circuit shown bottom right (Fig. 3).

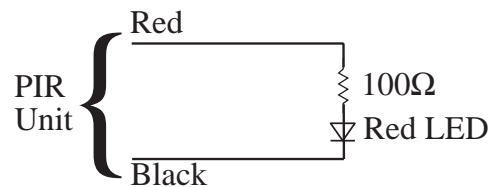
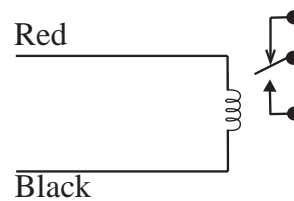


Fig. 2

OR



Things to consider. . . .

After installing a fresh battery, allow the unit to sit for about two minutes to give it ample time to charge its capacitors. There is a refractory period of about 10 seconds from the time that the unit is activated to when it can be activated again. You will also want to experiment with the orientation of the unit to the area that you are monitoring. You will notice more sensitivity towards the sides of the unit instead of straight on. Experiment for best results. If you experience signal transmission problems, the trim pot (P201) may need to be adjusted. Turn it all the way counterclockwise and then back clockwise. Do this several times.

Fig. 3

